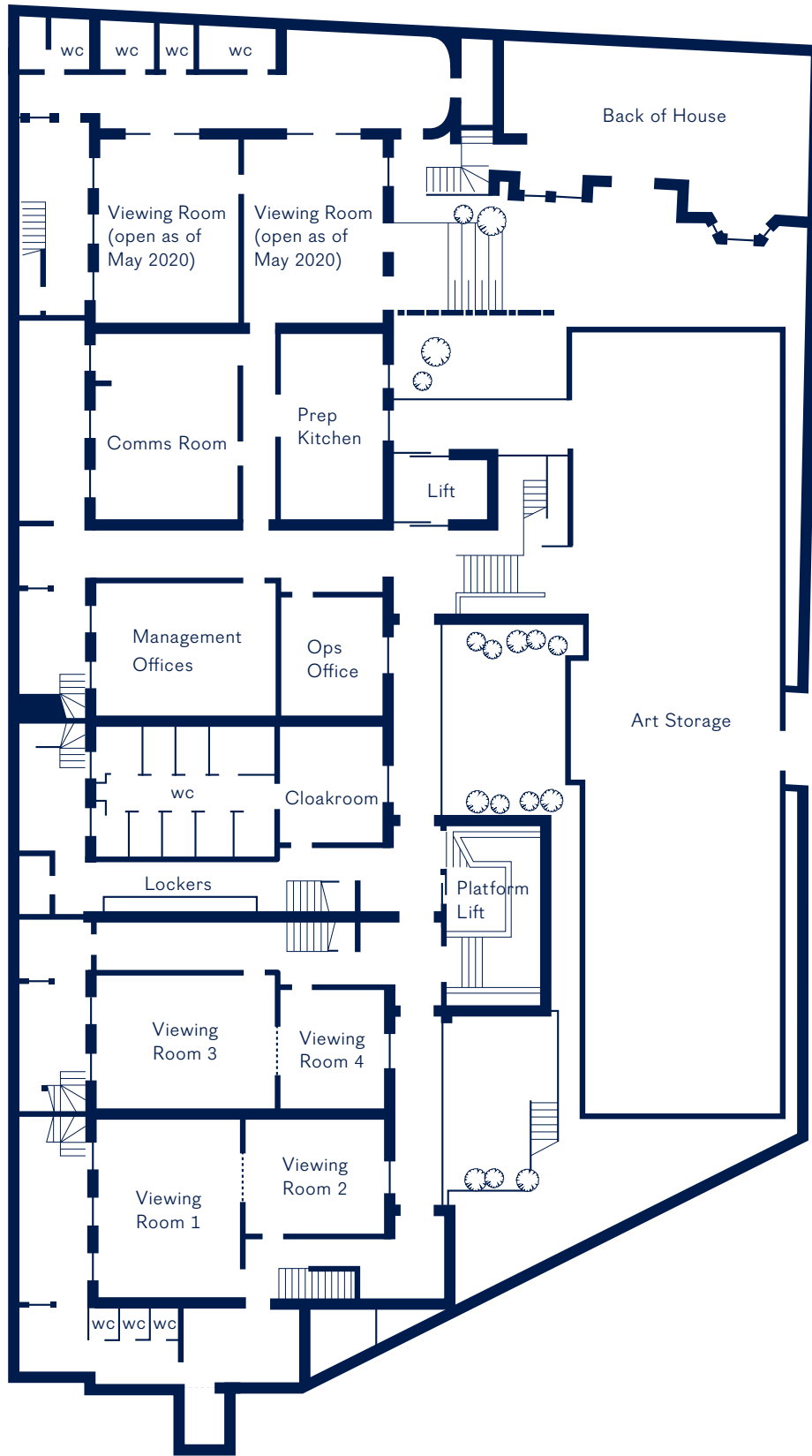
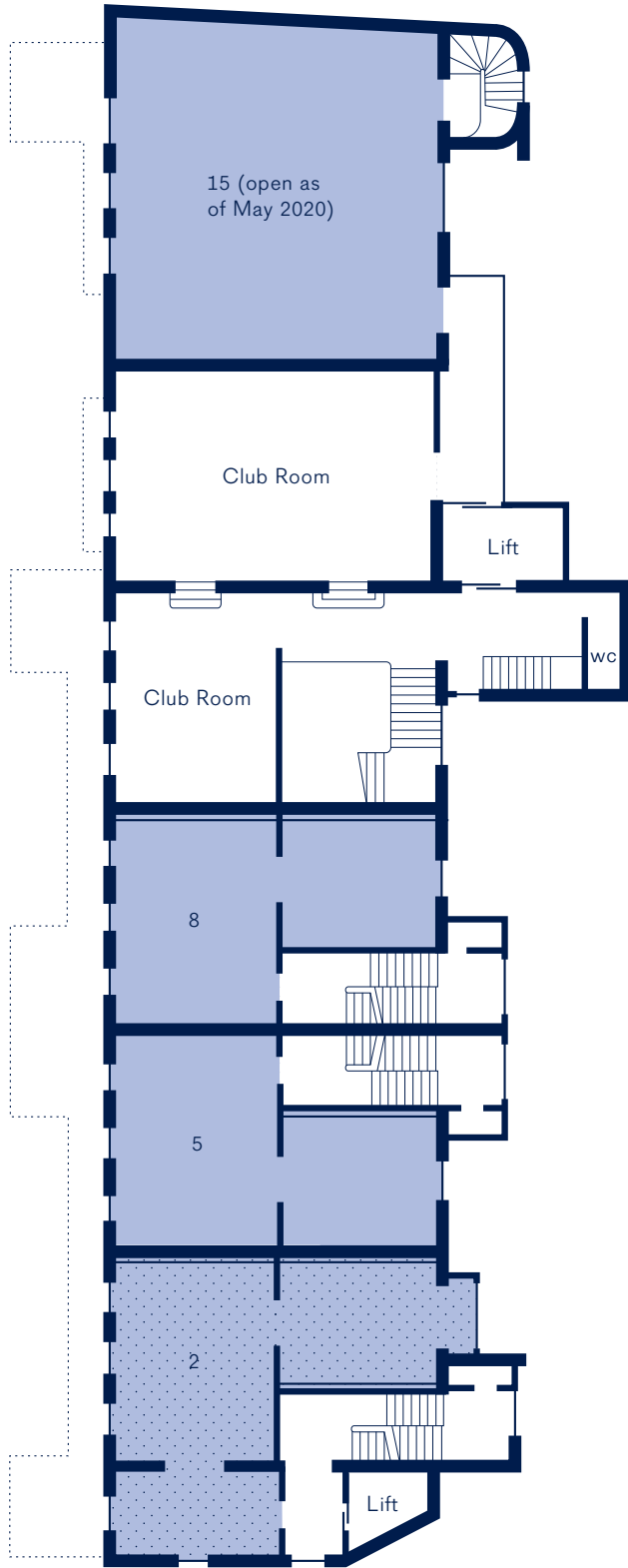


FLOOR PLANS

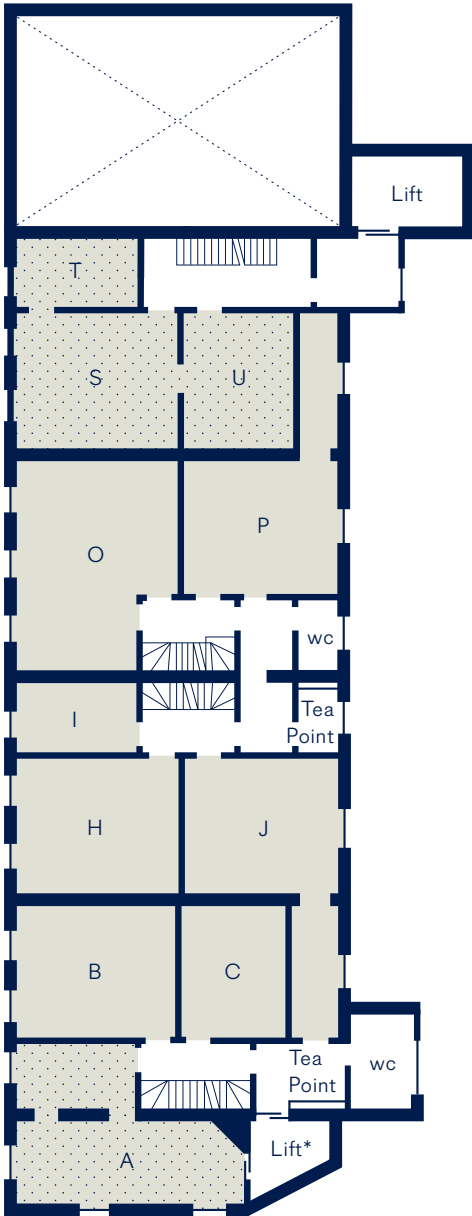










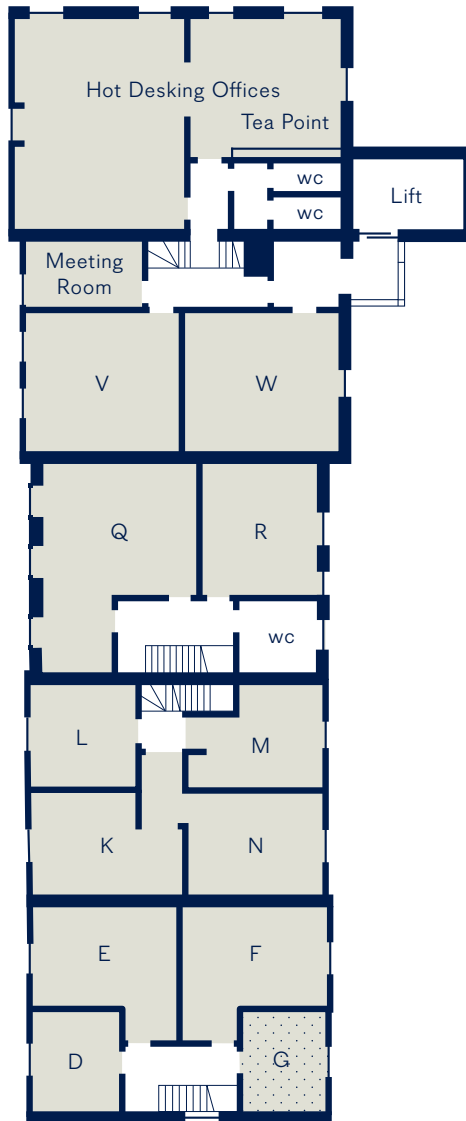


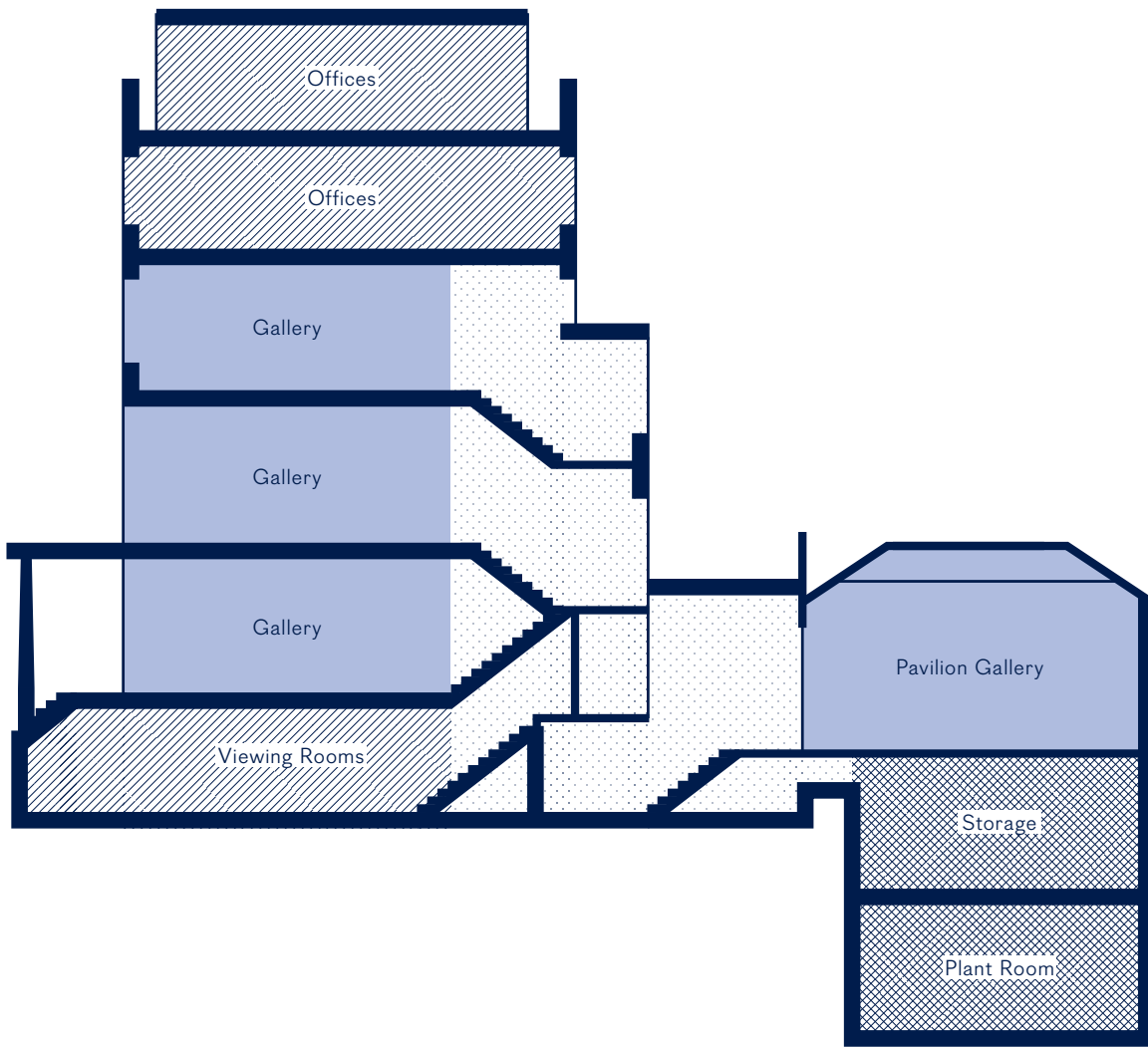




* Lift opening onto main corridor allowing lift access to offices A,B,C and J. Subject to RBKC planning approval.

-  Gallery
-  Hanging wall
-  Offices
-  Reserved





GALLERY SPECIFICATIONS

Lighting

A complimentary standard light package of Erco wall-washing and spotlights will provide sufficient high quality lighting for the majority of exhibitions. An in-house technician will be on hand to support install of lights.

Additional specialist lighting including framing projectors and sixdegree spotlights are available for an additional charge, giving galleries complete flexibility in the design of their exhibitions.

Security

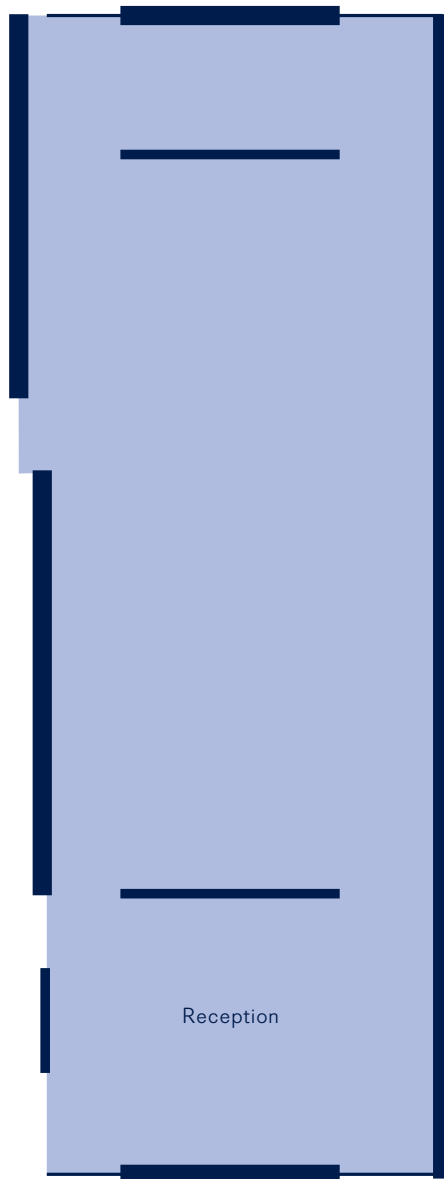
- CCTV: Avigilon™ line of megapixel cameras
- Avigilon H4 HD indoor dome cameras will be installed at key points of the common areas and in each gallery to provide identification
- Electronic Access control
- Intruder Alarm Monitoring
- Personal Attack Alarms in individual galleries will be placed discreetly
- Audio video intercom system

Furniture

A standard desk and chair will be included in each gallery rental. A selection of furniture will be available via our preferred suppliers nearer to the opening of Cromwell Place. This will incur an additional cost.

We reserve the right to change, amend, modify any parts of these Specifications and its accompanying documents, at any time without notice.

PAVILION GALLERY



Dimensions — 8.1m (w) × 17.7m (l) × 3.6m–4.7m (h)

Total Area — 1543 sq ft / 143.37m²

Loading — 4.0 kN/m²

Wall material — 12.5 wall board and one thick layer of ply wood

Wall colour — Neutral

Floor finish — Polished concrete, resin based

Height of doors — 3.6m

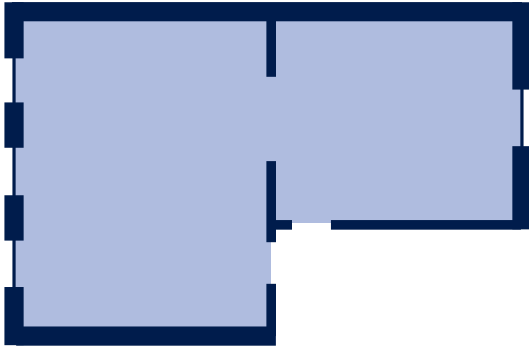
Windows — North facing ceiling windows with black out blinds

Mobility Access — Yes

Access — Unlimited length (within reason) through an opening of 1.6m (w) by 3.6m (h)

GALLERY 1

1 Cromwell Place, Ground Floor



Dimensions — 6.6m (w) × 10.9m (l) × 3.6m (h)

Total Area — 625 sq ft / 58m²

Loading — 2.75 kN/m²

Wall material — Plywood

Wall colour — Neutral

Floor finish — Hardwood timber floor

Height of doors — 2.2m clear opening

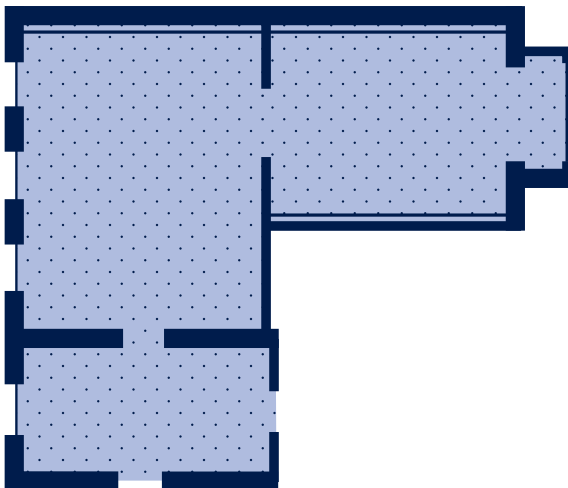
Windows — 4 large windows. All windows are fitted with security locks and screen blinds

Mobility Access — Yes

Lift Access from art storage — 1.6m (w) × 2.65m (h) × 2.1m (h)

GALLERY 2

1 Cromwell Place, First Floor



Dimensions — 9.8m (w) × 10.9m (l) × 3.6m (h)

Total Area — 785 sq ft / 73m²

Loading — 2.75 kN/m²

Wall material — Plywood

Wall colour — Neutral

Floor finish — Hardwood timber floor

Height of doors — 2.2m clear opening

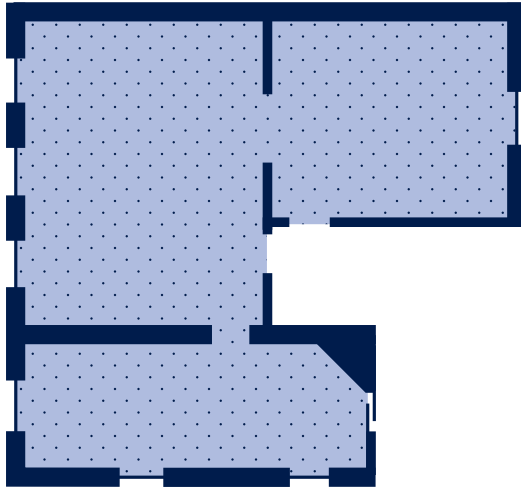
Windows — 4 floor to ceiling windows and one normal window. All windows are fitted with security locks and screen blinds

Mobility Access — Yes

Lift Access from art storage — 1.4m (w) × 1.1m (l) × 2.1m (h)

GALLERY 3

1 Cromwell Place, Second Floor



Dimensions — 9.8m (w) × 10.9m (l) × 3.3m (h)

Total Area — 686 sq ft / 64m²

Loading — 2.75 kN/m²

Wall material — Plywood

Wall colour — Neutral

Floor finish — Hardwood timber floor

Height of doors — 2.2m clear opening

Windows — 5 large windows. All windows are fitted with security locks and screen blinds

Mobility Access — Yes

Lift Access from art storage — 1.4m (w) × 1.1m (l) × 2.1m (h)

GALLERY 4

2 Cromwell Place, Ground Floor



Dimensions — 4.8m (w) × 10.9m (l) × 3.6m (h)

Total Area — 538 sq ft / 50m²

Loading — 2.75 kN/m²

Wall material — Plywood

Wall colour — Neutral

Floor finish — Hardwood timber floor

Height of doors — 2.2m clear opening

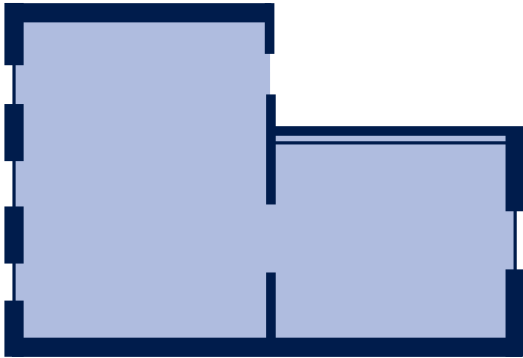
Windows — 3 large windows. All windows are fitted with security locks and screen blinds

Mobility Access — Yes

Lift Access from art storage — 1.6m (w) × 2.65m (h) × 2.1m (h)

GALLERY 5

2 Cromwell Place, First Floor



Dimensions — 6.8m (w) × 10.9m (l) × 3.6m (h)

Total Area — 625 sq ft / 58m²

Loading — 2.75 kN/m²

Wall material — Plywood

Wall colour — Neutral

Floor finish — Hardwood timber floor

Height of doors — 2.2m clear opening

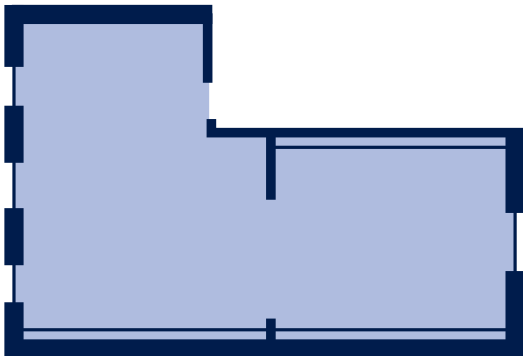
Windows — 4 large windows. All windows are fitted with security locks and screen blinds

Mobility Access — No

Lift Access from art storage — No

GALLERY 6

2 Cromwell Place, Second Floor



Dimensions — 6.8m (w) × 10.9m (l) × 3.3m (h)

Total Area — 611 sq ft / 57m²

Loading — 2.75 kN/m²

Wall material — Plywood

Wall colour — Neutral

Floor finish — Hardwood timber floor

Height of doors — 2.2m clear opening

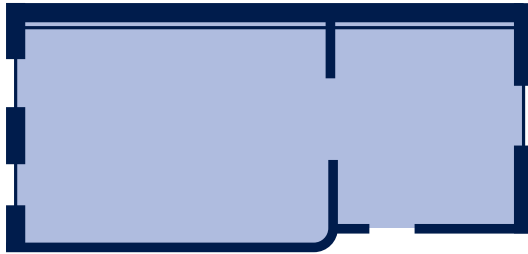
Windows — 4 large windows. All windows are fitted with security locks and screen blinds

Mobility Access — No

Lift Access from art storage — No

GALLERY 7

3 Cromwell Place, Ground Floor



Dimensions — 4.8m (w) × 10.9m (l) × 3.6m (h)

Total Area — 516 sq ft / 48m²

Loading — 2.75 kN/m²

Wall material — Plywood

Wall colour — Neutral

Floor finish — Hardwood timber floor

Height of doors — 2.2m clear opening

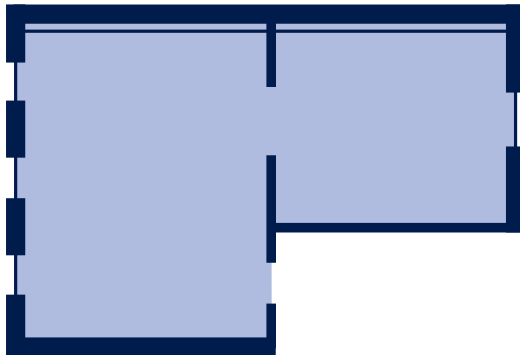
Windows — 3 large windows. All windows are fitted with security locks and screen blinds

Mobility Access — Yes

Lift Access from art storage — 1.6m (w) × 2.65m (h) × 2.1m (h)

GALLERY 8

3 Cromwell Place, First Floor



Dimensions — 6.8m (w) × 10.9m (l) × 3.6m (h)

Total Area — 635 sq ft / 59m²

Loading — 2.75 kN/m²

Wall material — Plywood

Wall colour — Neutral

Floor finish — Hardwood timber floor

Height of doors — 2.2m clear opening

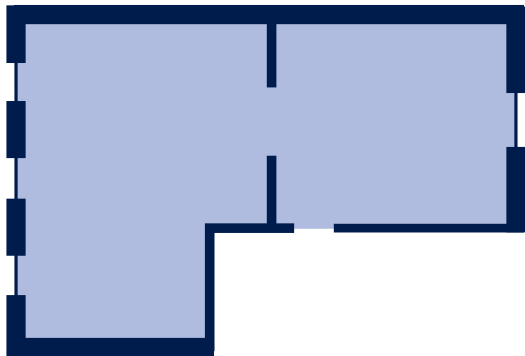
Windows — 4 large windows. All windows are fitted with security locks and screen blinds

Mobility Access — No

Lift Access from art storage — No

GALLERY 9

3 Cromwell Place, Second Floor



Dimensions — 6.8m (w) × 10.9m (l) × 3.3m (h)

Total Area — 600 sq ft / 56m²

Loading — 2.75 kN/m²

Wall material — Plywood

Wall colour — Neutral

Floor finish — Hardwood timber floor

Height of doors — 2.2m clear opening

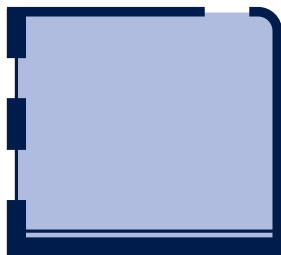
Windows — 4 large windows. All windows are fitted with security locks and screen blinds

Mobility Access — No

Lift Access from art storage — No

GALLERY 10

4 Cromwell Place, Ground Floor



Dimensions — 4.8m (w) × 5.4m (l) × 3.6m (h)

Total Area — 280 sq ft / 26m²

Loading — 2.75 kN/m²

Wall material — Plywood

Wall colour — Neutral

Floor finish — Hardwood timber floor

Height of doors — 2.2m clear opening

Windows — 2 large windows. All windows are fitted with security locks and screen blinds

Mobility Access — Yes

Lift Access from art storage — 1.6m (w) × 2.65m (l) × 2.1m (h)

GALLERY 11
4 Cromwell Place, Ground Floor



Dimensions — 6.7m (w) x 10.6m (l) x 3.6m (h)

Total Area — 818 sq ft / 76m²

Loading — 2.75 kN/m²

Wall material — Plywood

Wall colour — Neutral

Floor finish — Hardwood timber floor

Height of doors — 2.2m clear opening

Windows — 4 large windows. All windows are fitted with security locks and screen blinds

Mobility Access — Yes

Lift Access from art storage — 1.6m (w) x 2.65m (l) x 2.1m (h)

GALLERY 12
4 Cromwell Place, Second Floor



Dimensions — 4.8m (w) x 10.6m (l) x 3.3m (h)

Total Area — 549 sq ft / 51m²

Loading — 2.75 kN/m²

Wall material — Plywood

Wall colour — Neutral

Floor finish — Hardwood timber floor

Height of doors — 2.2m clear opening

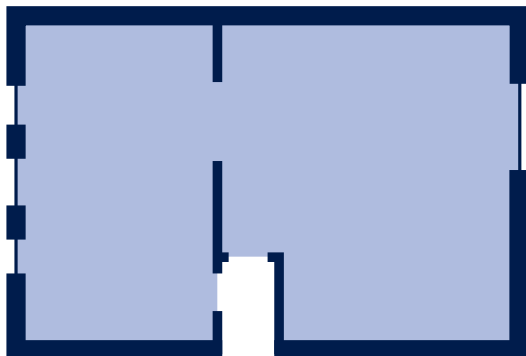
Windows — 3 large windows. All windows are fitted with security locks and screen blinds

Mobility Access — Yes

Lift Access from art storage — 1.6m (w) x 2.65m (l) x 2.1m (h)
with two small steps

GALLERY 13

4 Cromwell Place, Second Floor



Dimensions — 6.8m (w) × 10.9m (l) × 3.6m (h)

Total Area — 753 sq ft / 70m²

Loading — 2.75 kN/m²

Wall material — Plywood

Wall colour — Neutral

Floor finish — Hardwood timber floor

Height of doors — 2.2m clear opening

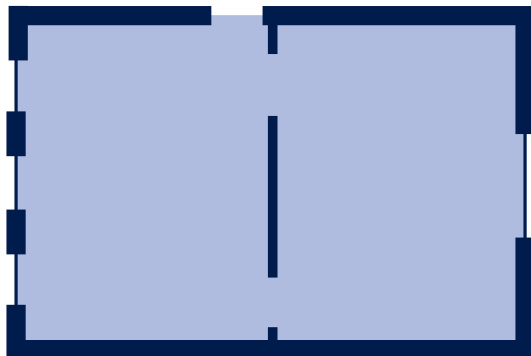
Windows — 4 large windows. All windows are fitted with security locks and screen blinds

Mobility Access — No

Lift Access from art storage — No

GALLERY 14 (AS OF MAY 2020)

5 Cromwell Place, Ground Floor



Dimensions — 6.8m (w) × 10.5m (l) × 3.6m (h)

Total Area — 776 sq ft / 72m²

Loading — 2.75 kN/m²

Wall material — Plywood

Wall colour — Neutral

Floor finish — Hardwood timber floor

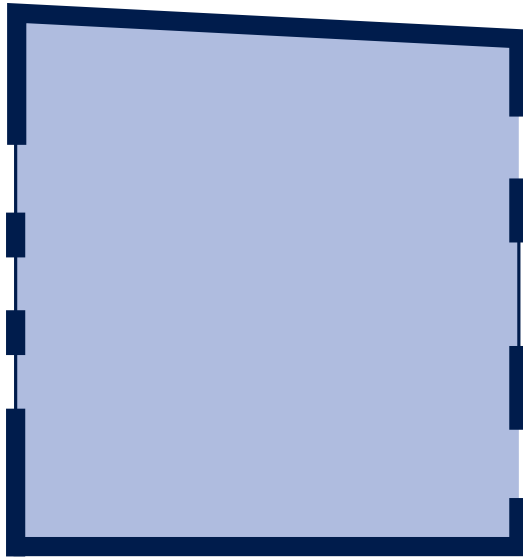
Height of doors — 2.2m clear opening

Windows — 4 large windows. All windows are fitted with security locks and screen blinds

Mobility Access — No

Lift Access from art storage — No

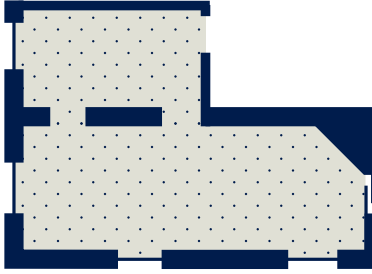
GALLERY 15 (AS OF MAY 2020)
5 Cromwell Place, First Floor



Dimensions — 10.6m (w) × 10.6m (l) × 5.5m - 7.4m (h)
Total Area — 1195 sq ft / 111m²
Loading — 2.75 kN/m²
Wall material — Plywood
Wall colour — Neutral
Floor finish — Hardwood timber floor

Height of doors — 2.2m clear opening
Windows — 3 floor to ceiling windows and one of the largest Georgian windows in the UK. All windows are fitted with security locks and screen blinds
Mobility Access — No
Lift Access from art storage — No

OFFICE A
1 Cromwell Place, Third Floor



Dimensions — 5.32m (w) x 7.60m/2.715m (l) x 2.65m (h)
Total Area — 312sq ft / 29m²
Loading — 2.75 kn/m²
Finishes — Basic Shell Scheme
Lift access — Yes

OFFICE C
1 Cromwell Place, Third Floor



Dimensions — 3.69m (w) x 4.36m (l) x 2.65m (h)
Total Area — 172 sq ft / 16m²
Loading — 2.75 kn/m²
Finishes — Basic Shell Scheme
Lift access — Yes

OFFICE B
1 Cromwell Place, Third Floor



Dimensions — 5.35m (w) x 4.35m (l) x 2.65m (h)
Total Area — 247.5 sq ft / 23m²
Loading — 2.75 kn/m²
Finishes — Basic Shell Scheme
Lift access — Yes

OFFICE D
1 Cromwell Place, Fourth Floor



Dimensions — 3.25m (w) x 2.99m (l) x 2.46m (h)
Total Area — 97 sq ft / 9m²
Loading — 2.75 kn/m²
Finishes — Basic Shell Scheme
Lift access — No

OFFICE E

1 Cromwell Place, Fourth Floor



Dimensions — 4.37m (w) x 4.79m (l) x 2.46m (h)

Total Area — 183 sq ft / 17m²

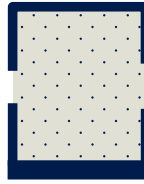
Loading — 2.75 kn/m²

Finishes — Basic Shell Scheme

Lift access — No

OFFICE G

1 Cromwell Place, Fourth Floor



Dimensions — 3.25m (w) x 2.90m (l) x 2.46m (h)

Total Area — 97.5 sq ft / 9m²

Loading — 2.75 kn/m²

Finishes — Basic Shell Scheme

Lift access — No

OFFICE F

1 Cromwell Place, Fourth Floor



Dimensions — 4.37m (w) x 4.79m (l) x 2.46m (h)

Total Area — 183 sq ft / 17m²

Loading — 2.75 kn/m²

Finishes — Basic Shell Scheme

Lift access — No

OFFICE H

2 Cromwell Place, Third Floor



Dimensions — 4.48m (w) x 5.55m (l) x 2.64m (h)

Total Area — 269.5 sq ft / 25m²

Loading — 2.75 kn/m²

Finishes — Basic Shell Scheme

Lift access — No

OFFICE I
2 Cromwell Place, Third Floor



Dimensions — 2.17m (w) x 4.25m (l) x 2.64m (h)
Total Area — 97.5 sq ft / 9m²
Loading — 2.75 kn/m²
Finishes — Basic Shell Scheme
Lift access — No

OFFICE K
2 Cromwell Place, Fourth Floor



Dimensions — 4.63m (w) x 4.97m (l) x 2.46m (h)
Total Area — 194.5 sq ft / 18m²
Loading — 2.75 kn/m²
Finishes — Basic Shell Scheme
Lift access — No

OFFICE J
2 Cromwell Place, Third Floor



Dimensions — 4.52m (w) x 5.14m (l) x 2.64m (h)
Total Area — 248.5 sq ft / 23m²
Loading — 2.75 kn/m²
Finishes — Basic Shell Scheme
Lift access — Yes

OFFICE L
2 Cromwell Place, Fourth Floor



Dimensions — 3.32m (w) x 3.53m (l) x 2.46m (h)
Total Area — 118.5 sq ft / 11m²
Loading — 2.75 kn/m²
Finishes — Basic Shell Scheme
Lift access — No

OFFICE M

2 Cromwell Place, Fourth Floor



Dimensions — 3.40m (w) x 2.81m (l) x 2.46m (h)
Total Area — 97.5 sq ft / 9m²
Loading — 2.75 kn/m²
Finishes — Basic Shell Scheme
Lift access — No

OFFICE O

3 Cromwell Place, Third Floor



Dimensions — 6.86m (w) x 5.55m (l) x 2.47m (h)
Total Area — 377.5 sq ft / 35m²
Loading — 2.75 kn/m²
Finishes — Basic Shell Scheme
Lift access — No

OFFICE N

2 Cromwell Place, Fourth Floor



Dimensions — 4.61m (w) x 4.51m (l) x 2.46m (h)
Total Area — 226 sq ft / 21m²
Loading — 2.75 kn/m²
Finishes — Basic Shell Scheme
Lift access — No

OFFICE P

3 Cromwell Place, Third Floor



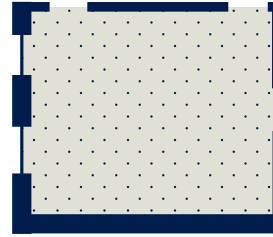
Dimensions — 4.50m (w) x 5.13m (l) x 2.47m (h)
Total Area — 248.5 sq ft / 23m²
Loading — 2.75 kn/m²
Finishes — Basic Shell Scheme
Lift access — No

OFFICE Q
3 Cromwell Place, Fourth Floor



Dimensions — 4.44m/ 2.31m (w) x 5.02m/ 2.81m (l) x 2.75m (h)
Total Area — 290 sq ft / 27m²
Loading — 2.75 kn/m²
Finishes — Basic Shell Scheme
Lift access — No

OFFICE S
4 Cromwell Place, Third Floor



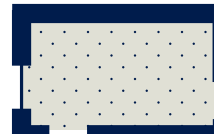
Dimensions — 4.45m (w) x 5.55m (l) x 2.64m (h)
Total Area — 269 sq ft / 25m²
Loading — 2.75 kn/m²
Finishes — Basic Shell Scheme
Lift access — Yes

OFFICE R
3 Cromwell Place, Fourth Floor



Dimensions — 4.41m (w) x 3.43m (l) x 2.75m (h)
Total Area — 161.5 sq ft / 15m²
Loading — 2.75 kn/m²
Finishes — Basic Shell Scheme
Lift access — No

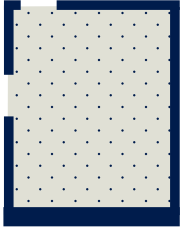
OFFICE T
4 Cromwell place, Third floor



Dimensions — 2.17m (w) x 4.25m (l) x 2.64m (h)
Total Area — 97 sq ft / 9m²
Loading — 2.75 kn/m²
Finishes — Basic Shell Scheme
Lift access — Yes

OFFICE U

4 Cromwell place, Third floor



Dimensions — 3.52 (w) x 4.46m (l) x 2.64m (h)

Total Area — 172 sq ft / 16m²

Loading — 2.75 kn/m²

Finishes — Basic Shell Scheme

Lift access — Yes

OFFICE W

4 Cromwell Place, Fourth Floor



Dimensions — 6.81m (w) x 5.175m (l) x 3.30m (h)

Total Area — 409 sq ft / 38m²

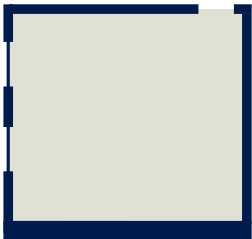
Loading — 2.75 kn/m²

Finishes — Basic Shell Scheme

Lift access — Yes

OFFICE V

4 Cromwell Place, Fourth Floor



Dimensions — 4.50m (w) x 5.12m (l) x 2.24m (h)

Total Area — 248 sq ft / 23m²

Loading — 2.75 kn/m²

Finishes — Basic Shell Scheme

Lift access — Yes

